

INVEST WITH **TRUST**, BUILD WITH **PASSION**



P R A W D Z I K

PROPERTIES



INFORMATION PACKAGE

Tillman St Raritan



2000 SQ. FT.
Living Space



Tillman St Raritan
New Jersey

NEW CONSTRUCTION

 **3**
STORIES

 **3**
BEDROOMS

 **3.5**
BATHROOMS

 **1**
GARAGE LOTS



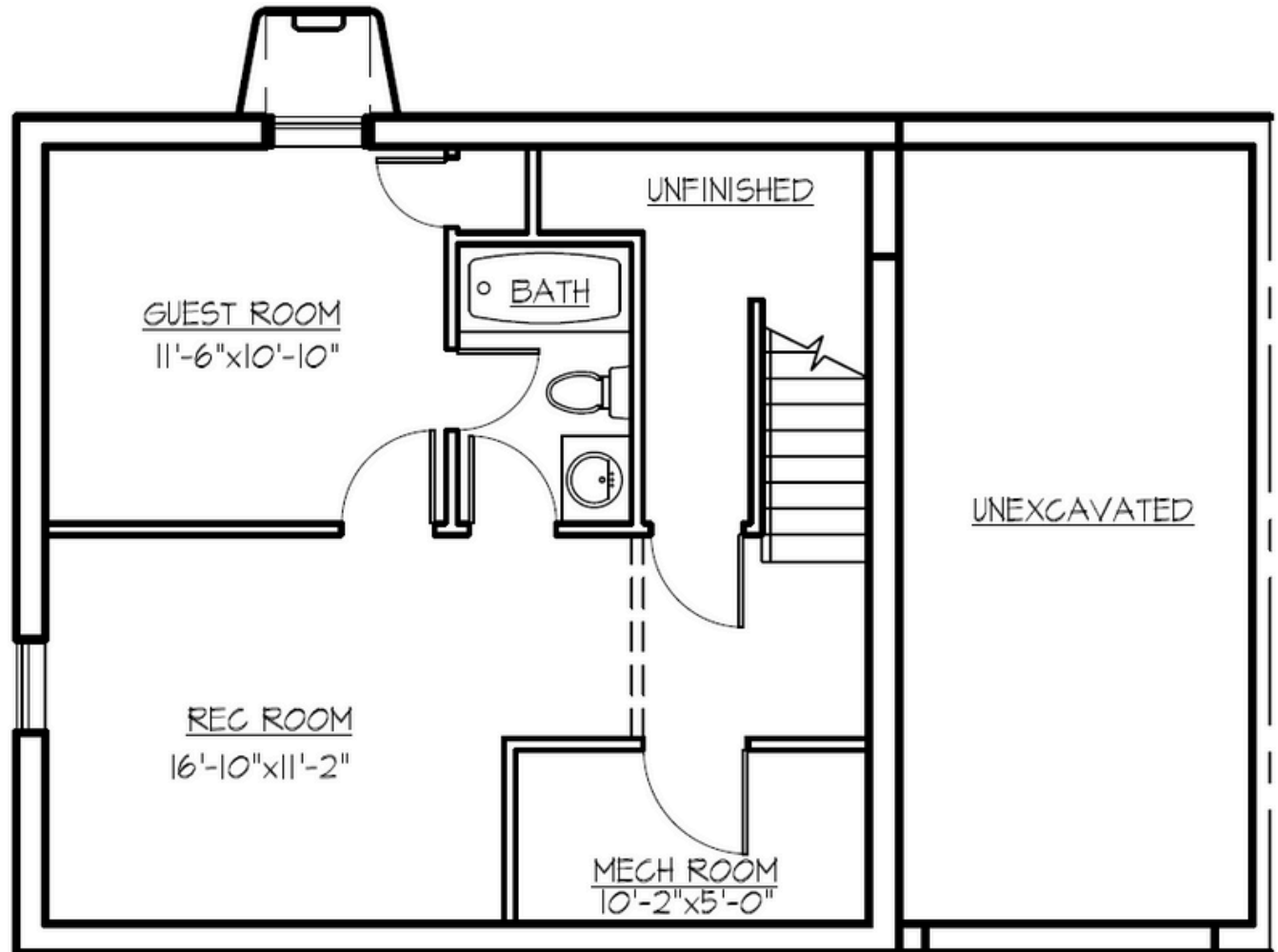
TILLMAN ST
RARITAN
NEW JERSEY
FLOOR PLANS



Basement



1





TILLMAN ST
RARITAN
NEW JERSEY
FLOOR PLANS



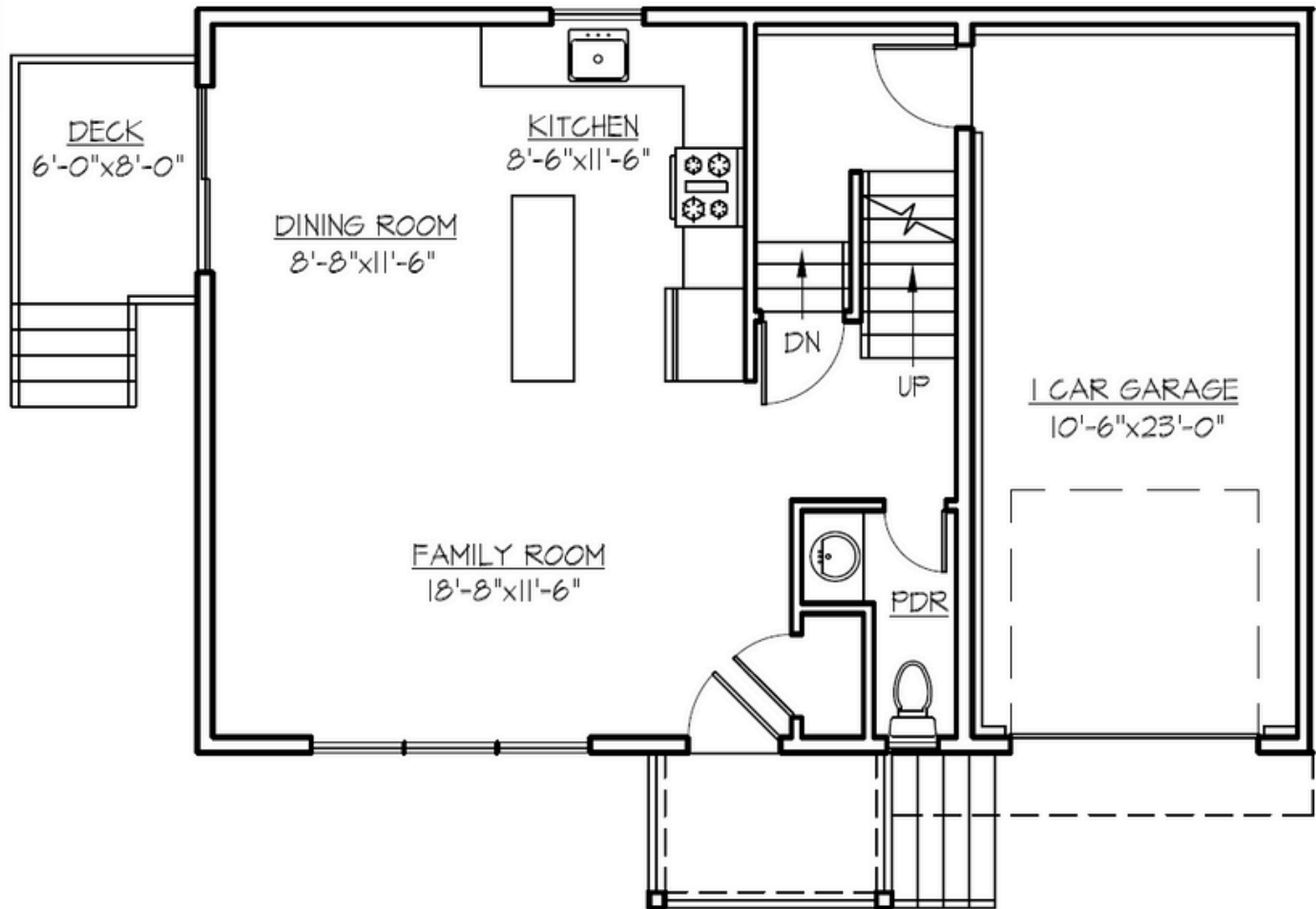
First Floor



1



0.5





TILLMAN ST
RARITAN
NEW JERSEY
FLOOR PLANS



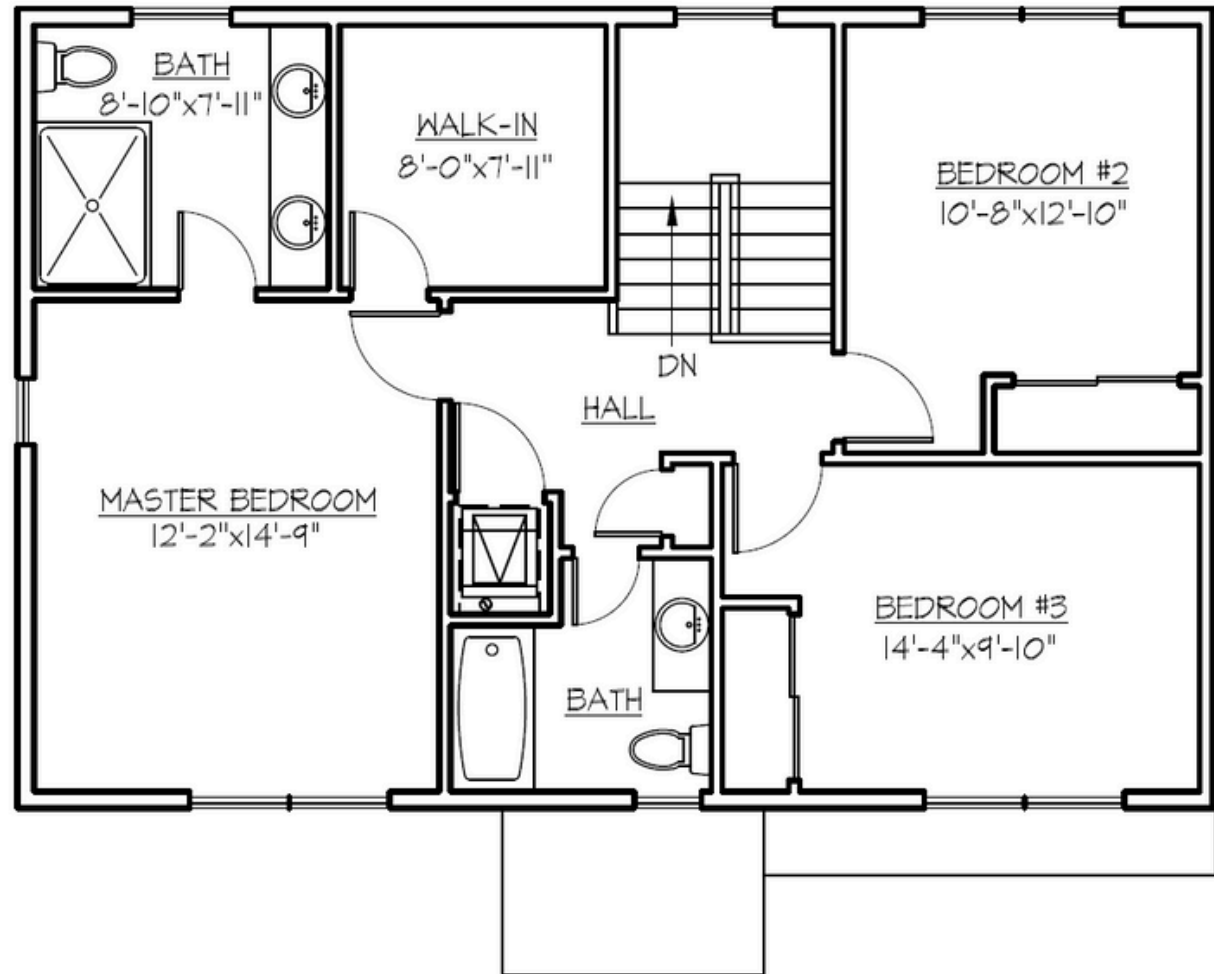
Second Floor



3



2





PRAWDZIK

PROPERTIES

OUR CORE VALUES

INTEGRITY | CONSISTENCY | RELIABILITY

PROPERTY DISCLAIMER

Homes on this website that are identified as "Coming Soon" and/or "For Sale" are in the process of being built by Prawdzik Properties and subject to Prawdzik Properties' and its professionals' discretion in the ultimate means, methods, form, construction, and design of the final product. Any photos, renderings, and/or floor plans listed on this website are non-final depictions of what the home may look like once complete. Such homes remain subject to design changes, both to the interior and exterior, that may occur during the home's construction as a result of on-site or other external conditions outside of Prawdzik Properties' control. These changes may include, but are not limited to the total square footage, bedroom count, fixtures, finishings, bathroom count, and floor plan layout. Irrespective of whether the home is still being marketed or is "Under Contract" or is "Sold," Prawdzik Properties has discretion to make changes based on its professional expertise. Additionally, all floor plans, drawings, and renderings are for illustrative purposes only and do not constitute the exact design for the home or its finishings. The images, floor plans, renderings, or other depictions of any home on this website may not accurately reflect the present state of the home or its final outcome. For full up-to-date plans and design concepts, please contact Hugo Alves in our Acquisitions Department.

