

INVEST WITH **TRUST**, BUILD WITH **PASSION**



**P R A W D Z I K**

**PROPERTIES**

2  
4  
0

**INFORMATION PACKAGE**

**240 Pinehurst**



PINEHURST AVENUE  
SCOTCH PLAINS,  
**NEW JERSEY**

**NEW CONSTRUCTION**



**2**

STORIES



**5**

BEDROOMS



**3.5**

BATHROOMS



**2**

GARAGE LOTS

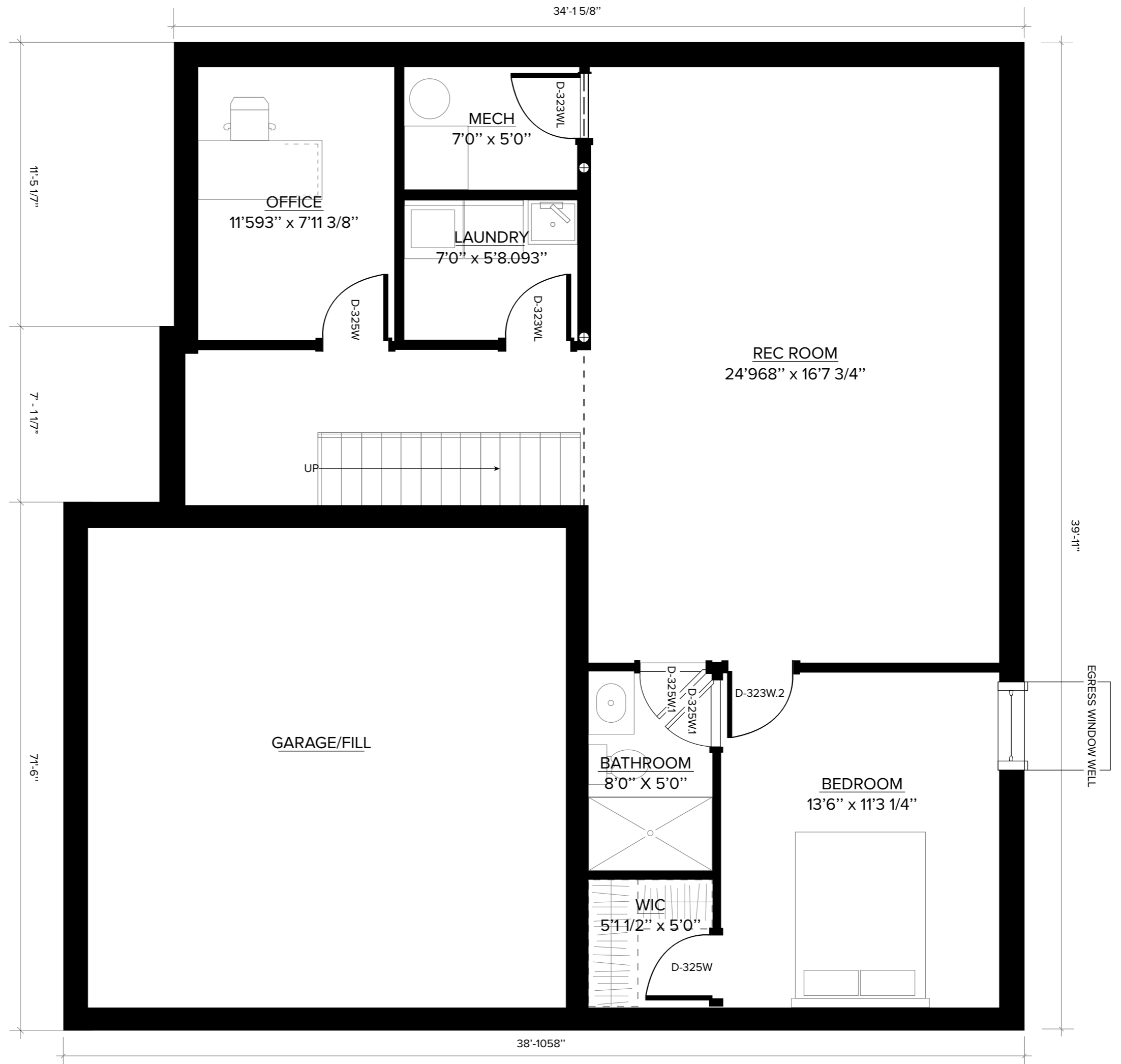
**3,450 SQ. FT.**  
Living Space



PINEHURST  
AVENUE SCOTCH  
PLAINS  
FLOOR PLANS



**Basement**





PINEHURST  
AVENUE SCOTCH  
PLAINS  
FLOOR PLANS



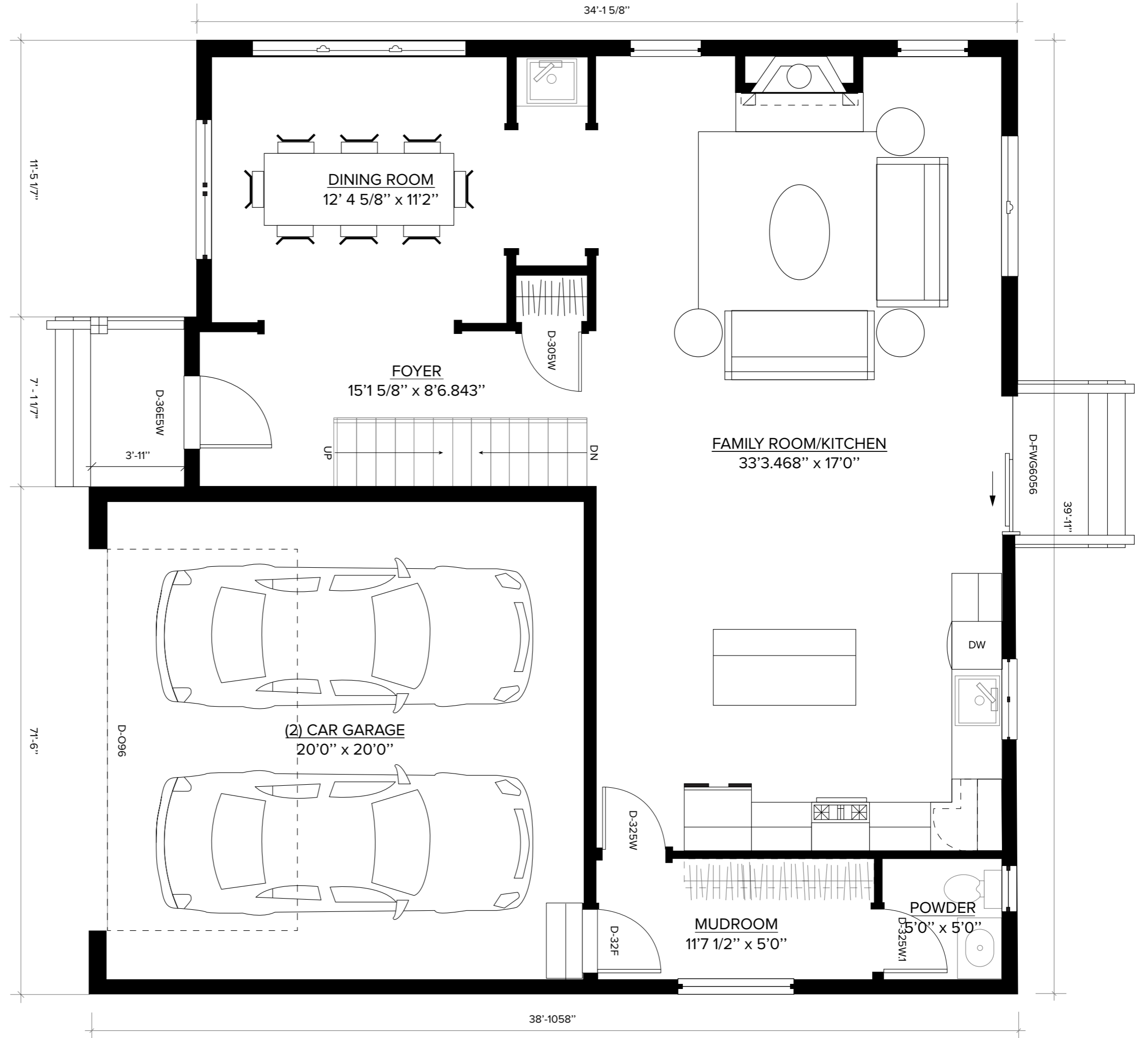
First floor



2



0.1





PINEHURST  
AVENUE SCOTCH  
PLAINS  
FLOOR PLANS



Second floor





PINEHURST AVENUE SCOTCH PLAINS  
INTERIOR





# P R A W D Z I K

PROPERTIES

## OUR CORE VALUES

INTEGRITY | CONSISTENCY | RELIABILITY

---

## PROPERTY DISCLAIMER

Homes on this website that are identified as "*Coming Soon*" and /or "*For Sale*" are in the process of being built by Prawdzik Properties and subject to Prawdzik Properties' and its professionals' discretion in the ultimate means, methods, form, construction, and design of the final product. Any photos, renderings, and/or floor plans listed on this website are non-final depictions of what the home may look like once complete. Such homes remain subject to design changes, both to the interior and exterior, that may occur during the home's construction as a result of on-site or other external conditions outside of Prawdzik Properties' control. These changes may include, but are not limited to the total square footage, bedroom count, fixtures, finishings, bathroom count, and floor plan layout. Irrespective of whether the home is still being marketed or is "Under Contract" or is "Sold," Prawdzik Properties has discretion to make changes based on its professional expertise. Additionally, all floor plans, drawings, and renderings are for illustrative purposes only and do not constitute the exact design for the home or its finishings. The images, floor plans, renderings, or other depictions of any home on this website may not accurately reflect the present state of the home or its final outcome. For full up-to-date plans and design concepts, please contact Hugo Alves in our Acquisitions Department.

