



PRAWDZIK

PROPERTIES

INVEST WITH TRUST, BUILD WITH PASSION
INFORMATION PACKAGE



PORTLAND AVE SCOTCH PLAINS, NEW JERSEY

New Construction | 5 Bedrooms / 4.5 Bathrooms
3,300 SQ. FT Living Space

Estimated Completion: Winter 2022



info@prawdzikproperties.com
www.prawdzikproperties.com



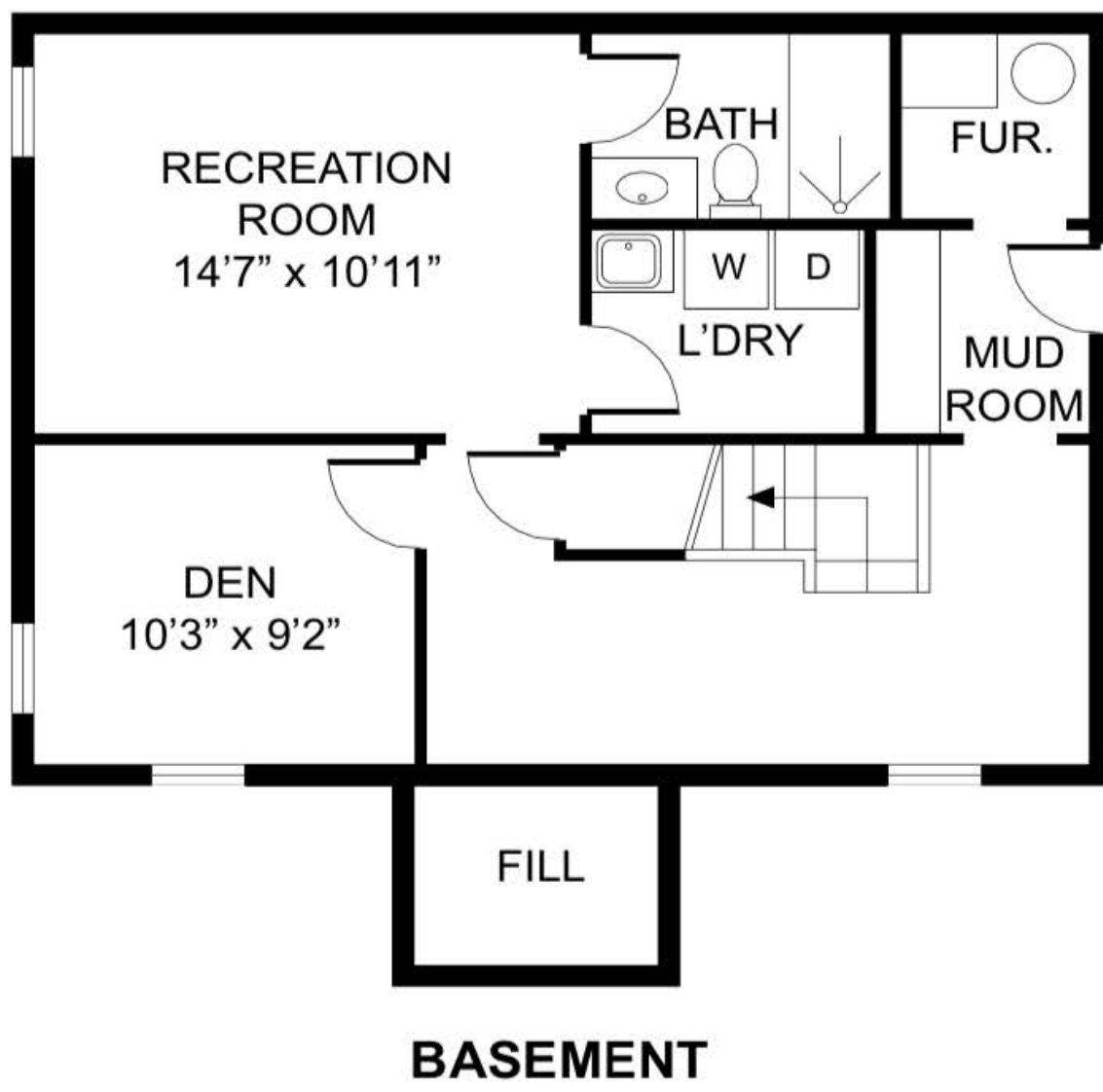
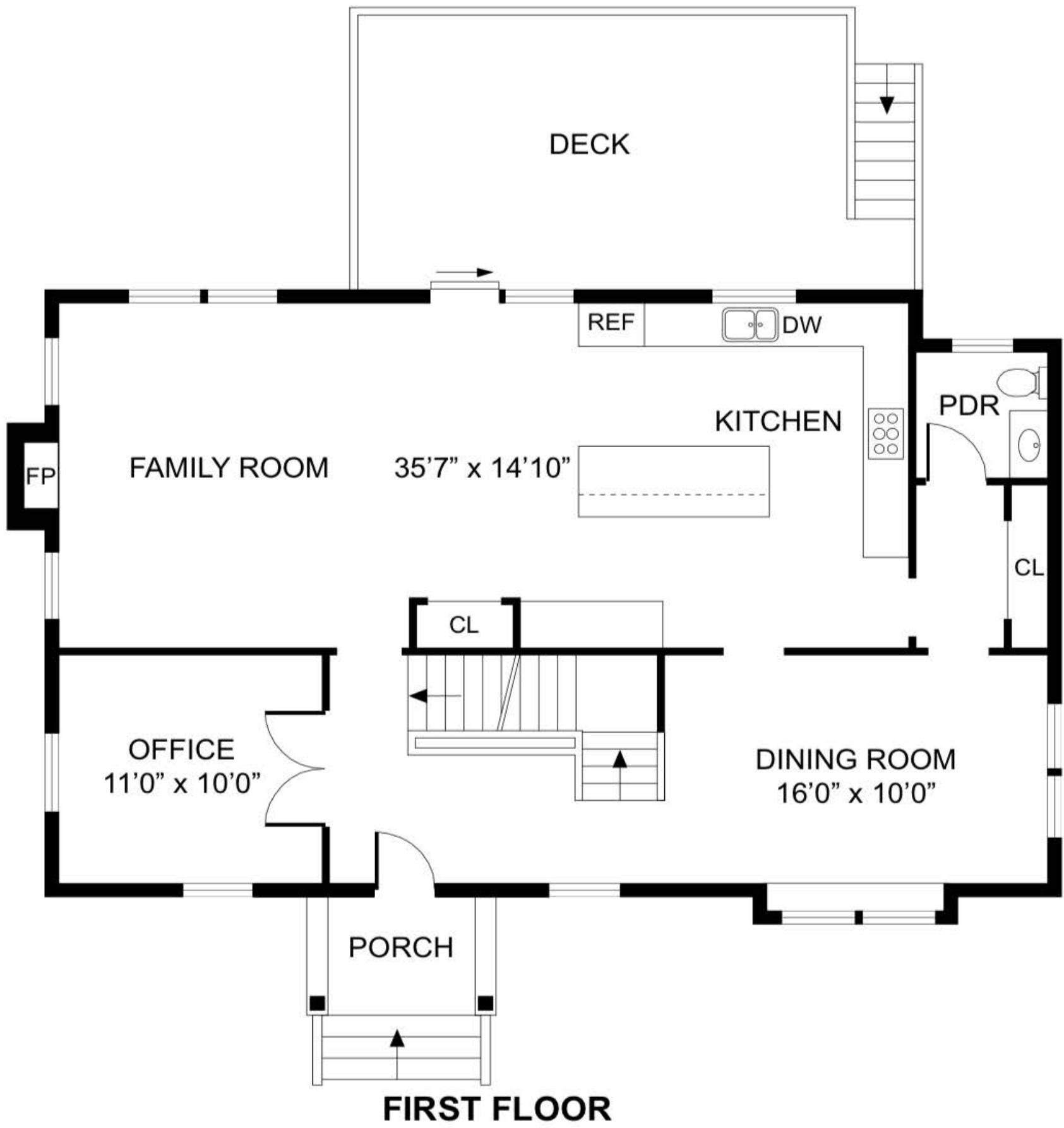


PORTLAND AVE SCOTCH PLAINS, NEW JERSEY

New Construction | 5 Bedrooms / 4.5 Bathrooms

3,300 SQ. FT Living Space

FLOOR PLANS
First Floor / Basement

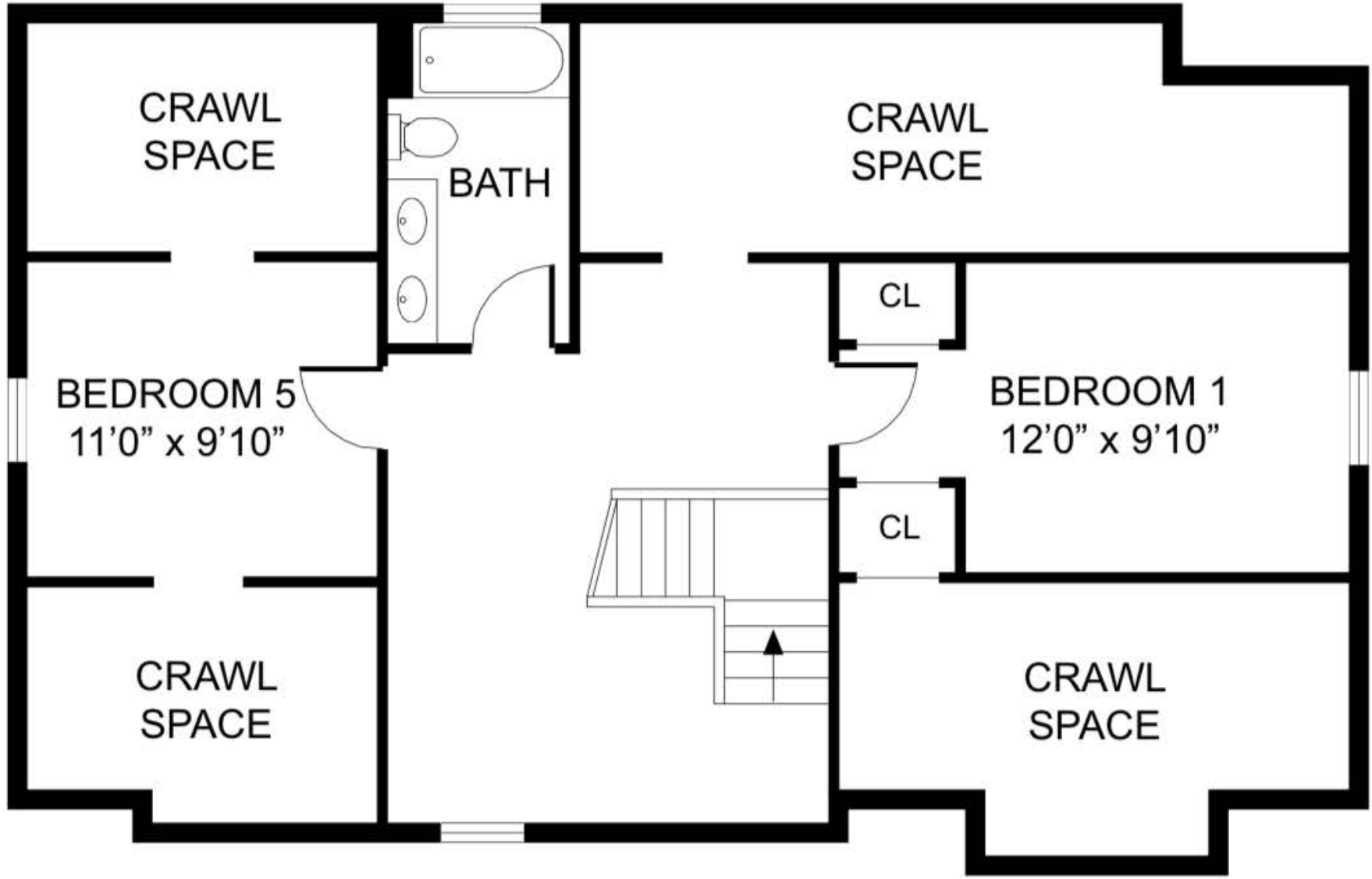




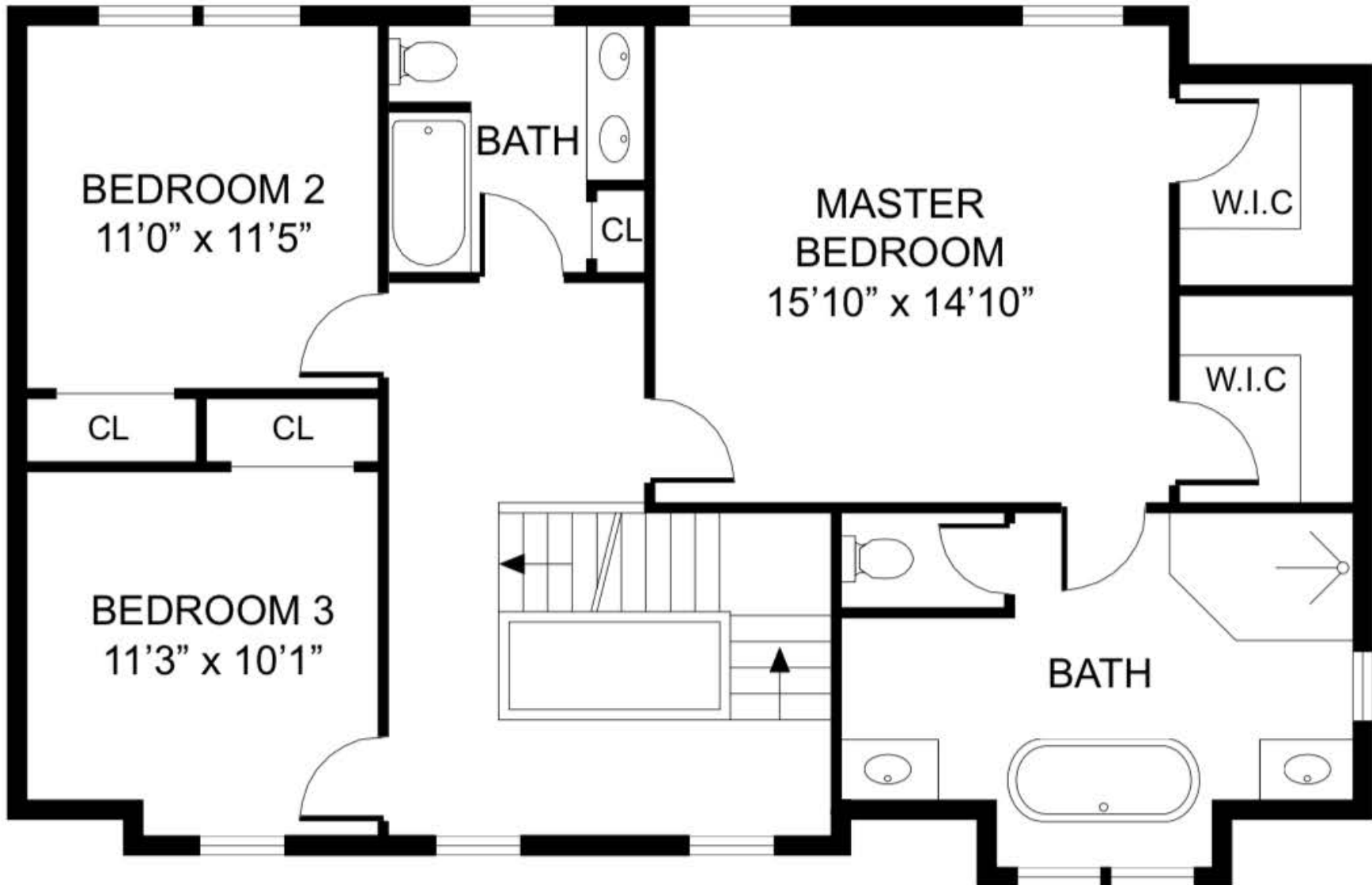
PORTLAND AVE SCOTCH PLAINS , NEW JERSEY

New Construction | 5 Bedrooms / 4.5 Bathrooms
3,300 SQ. FT Living Space

FLOOR PLANS
Second Floor / Attic



ATTIC FLOOR



SECOND FLOOR

